

TECHNICAL SERVICE BULLETIN

Bulletin No.: TSB-025

Date: April 14, 2017

Subject: Lower Close Out Panel Fasteners

Models: Gen 2 Back Of Cab Fuel Storage Modules

Background

Close out panels are present on the bottom of the fuel storage modules to prevent debris from entering the fuel storage module and possibly causing damage to the cylinders. In addition this lower close out panel supports the high pressure regulator.

**Condition**

Some customers have reported loosening or the loss of fasteners retaining the lower close out panel on the Gen 2 Back Of Cab (BOC) fuel storage systems

Cause

Vibration and relative motion may cause the lower close out panel fasteners to loosen. In addition, slight variances in torque application may result in uneven joint pressure which may contribute to the loss of fastener torque and eventual fastener loss.

Correction

Inspect the lower close out panel to ensure all fasteners are in place and secure. If fasteners are found to be loose or missing, Quantum will supply replacement fasteners. An alternate replacement fastener has been released that incorporates a larger washer to spread the joint load more effectively and a coating that performs a locking function.

Installation torque of the improved fastener is the same as the original fastener. 14 ft. lbs (19 Nm.)

TECHNICAL SERVICE BULLETIN

Labor Time

Gen 2 BOC Units (all trucks): Labor Time – 0.7 Hours for all model trucks Labor Operation SLT0002
 Add Time – 0.5 Hours for Kenworth
 0.5 Hours if equipped with a frame rail module.

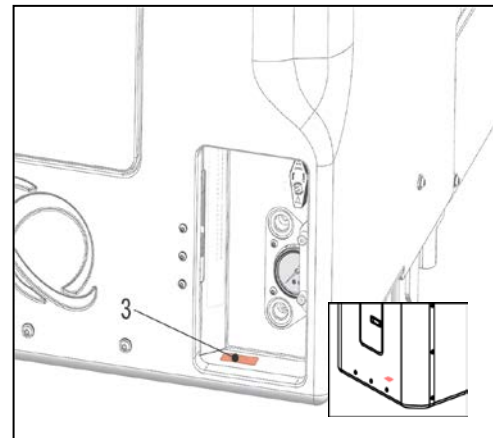
Parts Information

Description	Part Number
BOLT- COVER, LOWER (Qty 12)	118401-008

Application

The following fuel storage modules are affected by the bulletin and should be inspected.

The module identification label (3) can be found in the fill panel area on your module, it contains the module part number and serial number.



Module	Serial Number Range
116074 Gen 2 BOC Module (123 DGE)	0596 – 2377
117345 Gen 2 BOC Module (160 DGE)	0609 – 2050
117155 Gen 2 BOC Module (180 DGE)	2107 – 2364

Contact Information:

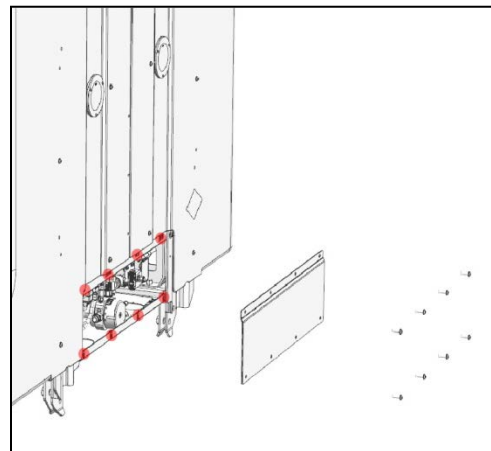
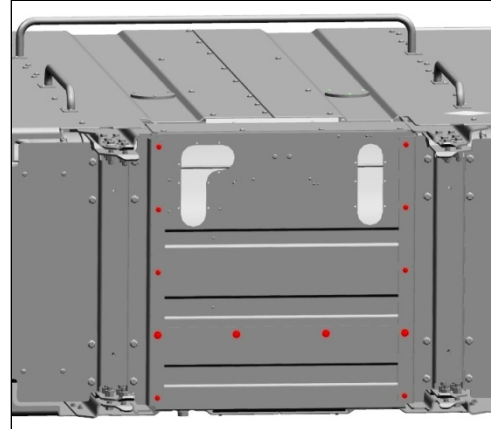
E-Mail: QTService@qtw.com
 Phone: 800.816.8691
 Fax: 949.930.3401

TECHNICAL SERVICE BULLETIN

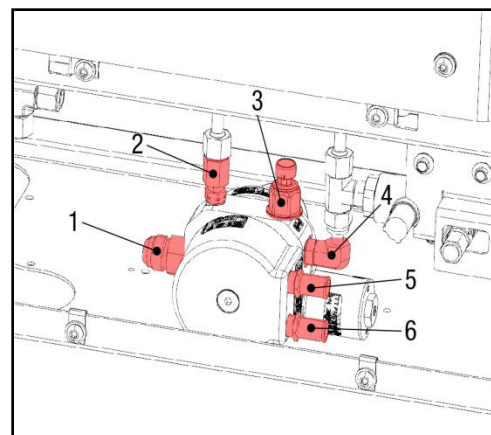
Close out Panel Fastener Replacement Procedure

The following procedure may be used to replace the fasteners on the lower close out panel on the Back Of Cab (BOC) CNG Fuel Storage Modules (FSM).

1. Remove the fasteners from the driver side of the lower close out panel in the locations shown in the illustration.
2. Install new fasteners in the driver's side of the cover. Tighten to 14 ft. lbs (19 Nm.)
3. Remove the fasteners from the passenger side of the lower close out panel in the locations shown in the illustration.
4. Install new fasteners in the passenger's side of the cover. Tighten to 14 ft. lbs (19 Nm.)
5. Tighten to 14 ft. lbs (19 Nm.)
6. Remove and retain the fasteners for the rear access panel.
7. Remove and retain the rear access panel.



8. Check the High Pressure Regulator for leaks at the points shown (1-4) by using a CNG gas detector, ultrasonic leak detector, or Snoop®. If using a gas detector, run the detector's probe along the top of all lines, joints, and fittings. Any leaks detected should be repaired before the unit is returned to service.
9. Check coolant hoses (5, 6) for any signs of leaks and repair as needed.



TECHNICAL SERVICE BULLETIN

10. Install previously removed access cover.
Tighten cover bolts to 14 lb ft. (19 N.m).

